

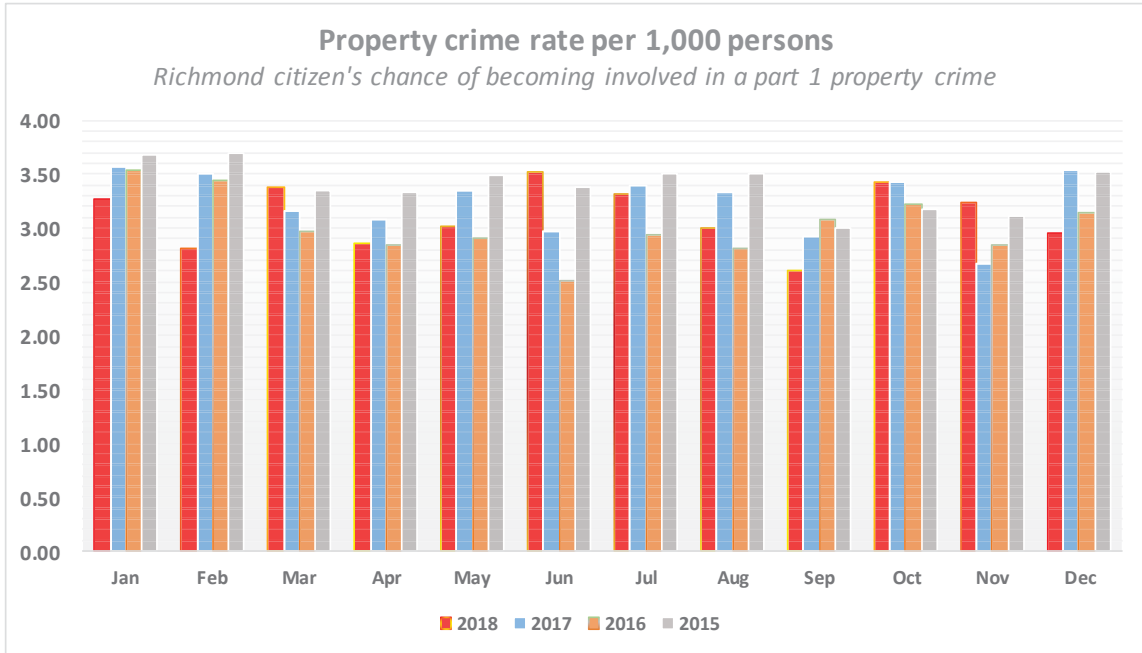
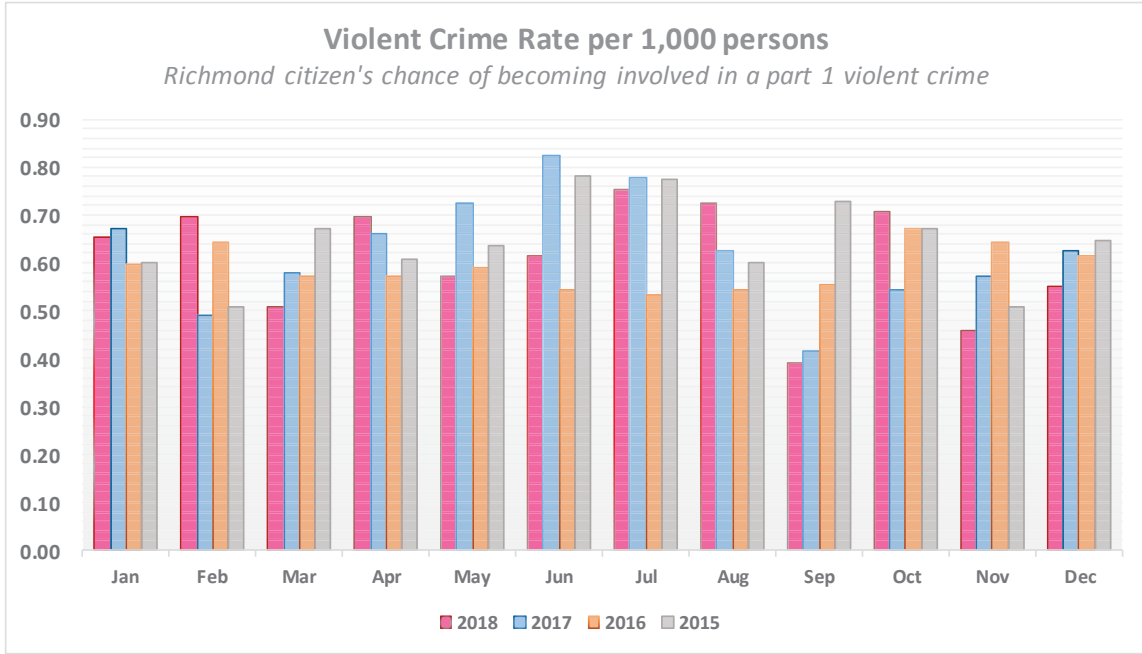


RICHMOND POLICE DEPARTMENT

PRE-UCR REPORT
*as of reports completed on
1/02/19



CITYWIDE CRIMES 2018	Nov	Dec	Month%	2yr avg	(1SD)	YTD2017	YTD2018	YTD%	YTD 2015	YTD 2016	-	Prev 90	Last 90	L90%
VIOLENT CRIMES	Monthly		Quantitative statistics			Year vs Year		12 months vs 12 months			Last 90 vs Previous 90 days			
[211A] Armed Robbery	11	12	+9%	13	5	180	131	-27%	205	150		21	40	+90%
[212.5] Home Robbery	3	1	-67%	2	1	17	22	+29%	16	15		7	5	-29%
[211E] Estes Robbery	3	5	+67%	2	2	23	29	+26%	36	23		9	12	+33%
[211S] Strongarm Robbery	14	9	-36%	13	3	170	153	-10%	142	164		31	43	+39%
[664] Attempted Robbery (all)	1	1	0%	2	2	25	25	0%	13	10		5	3	-40%
[215] Carjacking	3	3	0%	2	1	29	24	-17%	26	28		7	6	-14%
[245 A1] Assault D. Weapon	13	10	-23%	14	5	175	166	-5%	150	149		47	39	-17%
[243 D] Aggravated Battery	1	3	+200%	3	2	41	33	-20%	44	40		9	10	+11%
[245 A2] Assault with Firearm	0	5	-%	5	2	72	58	-19%	82	86		20	11	-45%
[664/187] Attempted Homicide	1	1	0%	1	1	6	9	+50%	13	5		4	2	-50%
[187] Homicide	2	1	-50%	1	1	15	18	+20%	21	24		5	5	0%
[246] Shooting @ Dwelling	10	10	0%	10	3	136	103	-24%	100	105		21	29	+38%
[247] Shooting @ Vehicle	1	0	-100%	2	1	28	21	-25%	21	18		3	1	-67%
[261] Rape	1	4	+300%	2	1	30	26	-13%	38	43		5	8	+60%
[288] [289] Child, Sodomy	1	6	+500%	3	2	46	37	-20%	43	35		11	10	-9%
[243 E1] Domestic Battery	20	20	0%	16	4	180	209	+16%	209	196		58	50	-14%
[273.5] Domestic Battery	23	27	+17%	27	7	365	288	-21%	347	361		92	84	-9%
PROPERTY CRIMES	Monthly		Quantitative statistics			Year vs Year		12 months vs 12 months			Last 90 vs Previous 90 days			
[451] Arson	7	5	-29%	4	2	47	50	+6%	26	36		17	16	-6%
[459A] Auto Burglary	87	93	+7%	91	15	1,136	1,058	-7%	1,027	924		233	269	+15%
[459C] Commercial Burglary	13	11	-15%	13	3	170	151	-11%	168	153		43	33	-23%
[459R] Residential Burglary	34	26	-24%	34	10	443	364	-18%	542	390		78	101	+29%
[487] Grand Theft	41	22	-46%	23	5	250	306	+22%	254	229		81	90	+11%
[484G/488/484] Petty Theft	83	96	+16%	85	12	1,061	977	-8%	1,100	886		254	268	+6%
[10851] Vehicle Theft	102	74	-27%	99	16	1,188	1,191	+0%	1,230	1,208		264	296	+12%
Total Violent Crimes	54	61	+13%	65	12	829	731	-12%	829	772		181	194	+7%
Total Property Crimes	367	327	-11%	350	30	4,295	4,097	-5%	4,347	3,826		970	1,073	+11%
Total Violent and Property	421	388	-8%	415	35	5,124	4,828	-6%	5,176	4,598		1,151	1,267	+10%
Total Aggravated Assaults	17	20	+18%	25	6	309	284	-8%	310	304		85	67	-21%
Total Burglaries	134	130	-3%	138	18	1,749	1,573	-10%	1,737	1,467		354	403	+14%
Total Robberies	35	31	-11%	35	8	444	384	-14%	438	390		80	109	+36%
Total Simple & Agg Assaults	60	67	+12%	68	10	854	781	-9%	866	861		235	201	-14%
Firearm crimes + 187	14	17	+21%	19	5	257	209	-19%	237	238		53	48	-9%
CALLS FOR SERVICE	Monthly		Quantitative statistics			Year vs Year		12 months vs 12 months			Last 90 vs Previous 90 days			
Drug Calls	20	15	-25%	24	8	264	314	+19%	290	285		69	76	+10%
Loitering/Prostitution Calls	59	80	+36%	63	16	675	877	+30%	703	679		249	232	-7%
Person with a Gun Calls	12	14	+17%	16	3	184	196	+7%	162	197		50	44	-12%
Shots Fired Calls	67	120	+79%	97	27	1,230	1,069	-13%	1,211	1,304		241	262	+9%
SHOTSPOTTER	Monthly		Quantitative statistics			Year vs Year		12 months vs 12 months			Last 90 vs Previous 90 days			
Activations	40	68	+70%	52	13	662	568	-14%	660	687		124	151	+22%
Rounds detected	208	343	+65%	284	98	3513	3,131	-11%	3,535	3,573		763	764	+0%





CENTRAL PART 1 CRIMES	Jan	Feb	Mar	Apr	May	Jun	Jul	Aug	Sep	Oct	Nov	Dec	Month %	2 year avg	SD (1SD)	YTD2017	YTD2018	YTD %	YTD2015	YTD2016	-	Last 90 Previous	Last 90 Current	L90 %
VIOLENT CRIMES	Monthly												Quantitative statistics			Year vs Year		12 months vs 12 months				Last 90 days		
[211A] Armed Robbery	6	3	0	2	4	1	3	2	2	4	4	3	-25%	4	2	54	32	-41%	63	55		8	9	+13%
[212.5] Home Robbery	0	0	0	0	0	0	0	2	1	0	0	0	-%	0	1	3	4	+33%	2	6		2	2	0%
[211E] Estes Robbery	0	0	1	1	0	0	0	1	0	0	1	1	0%	0	0	3	4	+33%	7	4		1	1	0%
[211S] Strongarm Robbery	2	3	2	7	4	8	4	5	5	12	6	1	-83%	5	2	56	59	+5%	41	47		17	22	+29%
[664/211] Attempted Robbery	1	0	0	0	1	0	2	1	0	0	1	0	-100%	1	1	8	8	0%	4	4		3	1	-67%
[215] Carjacking	1	1	1	1	1	1	1	0	1	0	0	1	-%	1	1	9	9	0%	11	12		3	1	-67%
[245 A1] Assault D. Weapon	5	6	7	2	4	6	8	2	7	6	3	4	+33%	5	2	61	70	+15%	48	58		19	16	-16%
[243 D] Aggravated Battery	1	1	0	3	0	2	3	1	1	3	0	1	-%	1	1	7	16	+129%	15	14		6	4	-33%
[245 A2] Assault with Firearm	5	2	2	1	3	0	3	5	1	4	0	2	-%	3	2	30	29	-3%	28	34		8	5	-38%
[664/187] Attempted Homicide	0	1	0	0	0	0	0	1	1	0	0	0	-%	0	0	1	4	+300%	3	2		2	1	-50%
[187] Homicide	0	0	0	0	1	1	0	4	0	1	0	0	-%	0	1	4	7	+75%	4	7		5	1	-80%
[246] Shooting @ Dwelling	8	1	6	2	2	3	2	5	3	2	5	5	0%	4	2	43	40	-7%	34	39		12	10	-17%
[247] Shooting @ Vehicle	2	1	1	1	0	1	2	1	0	0	0	0	-%	1	1	8	9	+13%	13	8		4	0	-100%
[261] Rape	0	1	1	1	1	0	0	0	1	2	1	0	-100%	1	1	10	8	-20%	9	11		0	4	-%
[288, 289] Child, Sodomy	2	0	0	2	3	0	3	1	1	0	0	3	-%	1	1	14	14	0%	19	14		6	1	-83%
[243 E1] Domestic Battery	6	5	10	5	7	2	5	10	6	2	8	5	-38%	5	3	41	69	+68%	68	67		17	16	-6%
[273.5] Domestic Battery	8	2	7	6	5	9	8	14	8	11	9	10	+11%	8	3	86	88	+2%	109	145		33	28	-15%
PROPERTY CRIMES	Monthly												Quantitative statistics			Year vs Year		12 months vs 12 months				Last 90 days		
[451] Arson	2	1	1	2	1	3	4	6	0	0	2	2	0%	2	1	20	24	+20%	8	14		13	2	-85%
[459A] Auto Burglary	13	11	14	7	7	10	15	10	6	7	10	8	-20%	11	3	132	110	-17%	155	176		35	22	-37%
[459C] Commercial Burglary	3	2	0	0	0	2	0	2	2	0	1	1	0%	1	1	12	12	0%	27	18		4	3	-25%
[459R] Residential Burglary	5	1	9	6	6	2	2	3	1	7	5	5	0%	5	3	69	48	-30%	95	77		7	12	+71%
[487] Grand Theft	8	4	4	4	3	5	6	5	5	6	7	5	-29%	5	2	54	58	+7%	43	34		17	18	+6%
[484G/488/484] Petty Theft	10	12	19	7	15	11	19	15	14	16	17	28	+65%	17	5	201	156	-22%	208	165		47	47	0%
[10851] Vehicle Theft	49	35	45	36	34	36	21	22	13	23	20	11	-45%	28	10	305	339	+11%	325	326		79	58	-27%
Total Violent Crimes	23	18	14	20	22	19	27	25	21	32	16	16	0%	22	5	260	264	+2%	254	268		80	68	-15%
Total Property Crimes	90	66	92	62	66	69	67	63	41	59	62	60	-3%	70	12	793	747	-6%	861	810		202	162	-20%
Total Violent and Property	113	84	106	82	88	88	94	88	62	91	78	76	-3%	92	13	1,053	1,011	-4%	1,115	1,078		282	230	-18%
Total Aggravated Assaults	11	10	9	6	8	9	14	13	10	14	3	7	+133%	9	3	103	126	+22%	98	115		40	27	-33%
Total Burglaries	21	14	23	13	13	14	17	15	9	14	16	14	-13%	18	4	213	170	-20%	277	271		46	37	-20%
Total Robberies	10	7	4	11	10	10	10	11	9	16	12	6	-50%	11	3	133	116	-13%	128	128		34	36	+6%
CALLS FOR SERVICE	Monthly												Quantitative statistics			Year vs Year		12 months vs 12 months				Last 90 days		
Drugs	9	5	20	16	11	5	9	7	13	9	7	4	-43%	8	4	82	115	+40%	104	93		29	20	-31%
Loitering 647B	13	10	11	17	22	20	13	7	19	15	7	8	+14%	15	5	197	162	-18%	221	163		39	30	-23%
Person with gun	4	4	4	12	8	6	9	4	5	4	4	5	+25%	6	2	64	69	+8%	64	85		18	13	-28%
Shooting	55	28	33	30	43	43	35	40	32	21	28	43	+54%	36	10	443	431	-3%	457	474		107	92	-14%
SHOTSPOTTER	Monthly												Quantitative statistics			Year vs Year		12 months vs 12 months				Last 90 days		
Activations	35	17	22	24	31	25	31	31	17	23	32	+39%	26	6	269	281	+4%	335	327		87	72	-17%	
Rounds Detected	223	149	157	93	102	142	136	219	82	101	91	165	+81%	137	53	1,356	1,495	+10%	1,746	1,766		437	357	-18%



RICHMOND POLICE DEPARTMENT

PRE-UCR REPORT
 *as of reports completed on
 1/02/19



BEAT 4 CENTRAL	Nov	Dec	+/-	MON %	YoY17	YoY18	+/- %	L90P	L90N	+/- %
Violent Crimes					YOY 2017- 2018			LAST90DAYS		
Robbery 211A Armed	2	2	0	0%	24	15	-38%	3	4	+33%
Robbery 212.5 Home	0	0	0	-%	1	0	-100%	0	0	-%
Robbery 211 Estes	0	0	0	-%	1	0	-100%	0	0	-%
Robbery 211S Strongarm	3	0	-3	-100%	31	20	-35%	4	9	+125%
Robbery 664/211 Attempt	0	0	0	-%	0	1	-%	0	0	-%
Carjacking 215	0	1	1	-%	2	4	+100%	0	1	-%
Assault DW 245 A1	0	0	0	-%	17	18	+6%	3	1	-67%
Aggravated Battery 243 D	0	0	0	-%	1	3	+200%	1	1	0%
Assault Firearm 245 A2	0	1	1	-%	5	8	+60%	2	1	-50%
Attempt Homicide 664/187	0	0	0	-%	0	0	-%	0	0	-%
Homicide 187	0	0	0	-%	0	1	-%	1	0	-100%
Shooting @ Dwelling 246	2	2	0	0%	15	18	+20%	3	4	+33%
Shooting @ Vehicle 247	0	0	0	-%	5	3	-40%	2	0	-100%
Rape 261	1	1	0	0%	7	4	-43%	0	3	-%
Child, Sodomy 288 289	0	2	2	-%	6	8	+33%	3	2	-33%
Battery 243 E1	4	2	-2	-50%	14	20	+43%	3	6	+100%
Battery 273.5	5	3	-2	-40%	23	34	+48%	12	9	-25%
Property Crimes					YOY 2017- 2018			LAST90DAYS		
Arson 451	0	2	2	-%	8	10	+25%	3	2	-33%
Auto Burglary 459 A	4	2	-2	-50%	35	42	+20%	10	9	-10%
Commercial Burglary 459 C	0	0	0	-%	1	3	+200%	0	0	-%
Residential Burglary 459 R	1	3	2	+200%	24	20	-17%	3	6	+100%
Grand Theft 487	3	0	-3	-100%	15	15	0%	5	5	0%
Petty Theft 484 488	5	15	10	+200%	69	54	-22%	13	25	+92%
Vehicle Theft 10851	10	4	-6	-60%	125	116	-7%	14	20	+43%
Total Violent Crimes	6	7	1	+17%	95	82	-14%	17	22	+29%
Total Property Crimes	23	26	3	+13%	277	260	-6%	48	67	+40%
Total Violent and Property	29	33	4	+14%	372	342	-8%	65	89	+37%
Total Burglaries	5	5	0	0%	60	65	+8%	13	15	+15%
Percentage of Citywide	4%	4%	+0%		3%	4%		4%	4%	
Total Robberies	5	3	-2	-40%	59	40	-32%	7	14	+100%
Percentage of Citywide	14%	10%	-5%		13%	10%		9%	13%	
Vehicle Theft % Citywide	10%	5%	-4%		11%	10%		5%	7%	
Calls for Service					YOY 2017- 2018			LAST90DAYS		
Drugs	1	0	-1	-100%	9	24	+167%	4	1	-75%
Loitering 647B	1	2	1	+100%	21	35	+67%	11	5	-55%
Person with gun	1	1	0	0%	20	20	0%	7	5	-29%
Shooting	6	14	8	+133%	131	118	-10%	30	28	-7%
Shotspotter					YOY 2017- 2018			LAST90DAYS		
Activations (SSA)	6	13	7	+117%	97	80	-18%	16	24	+50%
Rounds Detected (SSR)	20	64	44	+220%	447	456	+2%	109	103	-6%
Percentage of Citywide (SSA)	15%	19%	4%		15%	14%		13%	16%	
Percentage of Citywide (SSR)	10%	19%	9%		13%	15%		14%	13%	

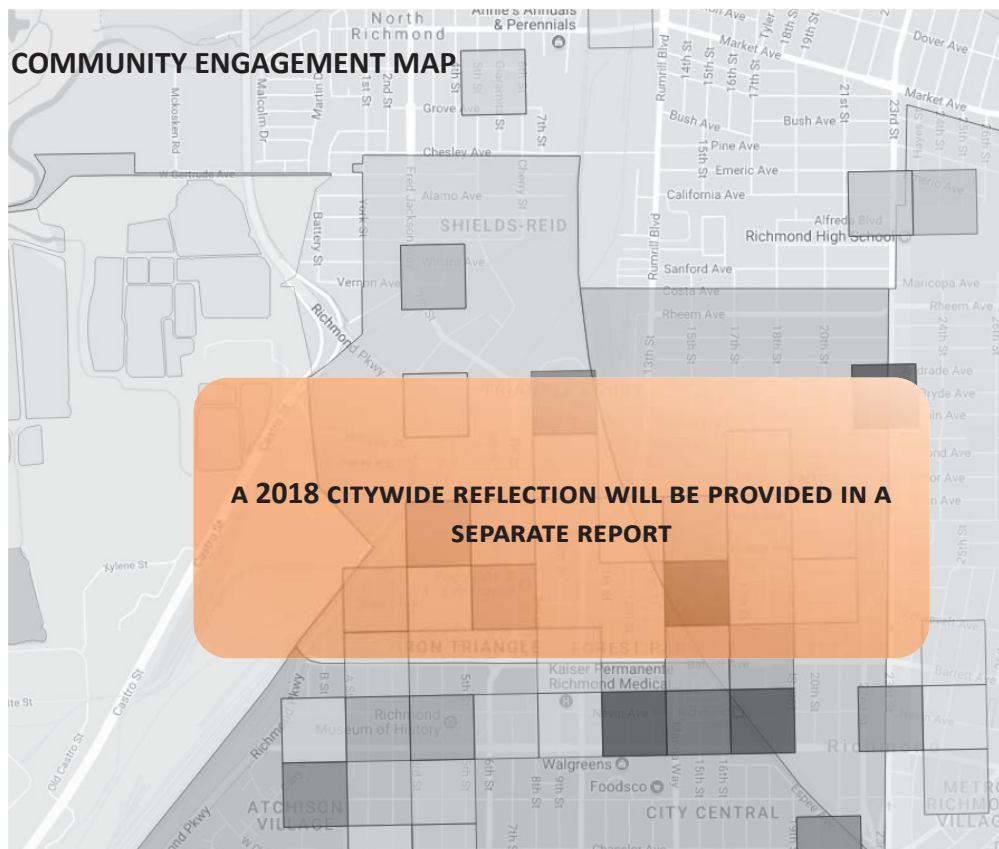
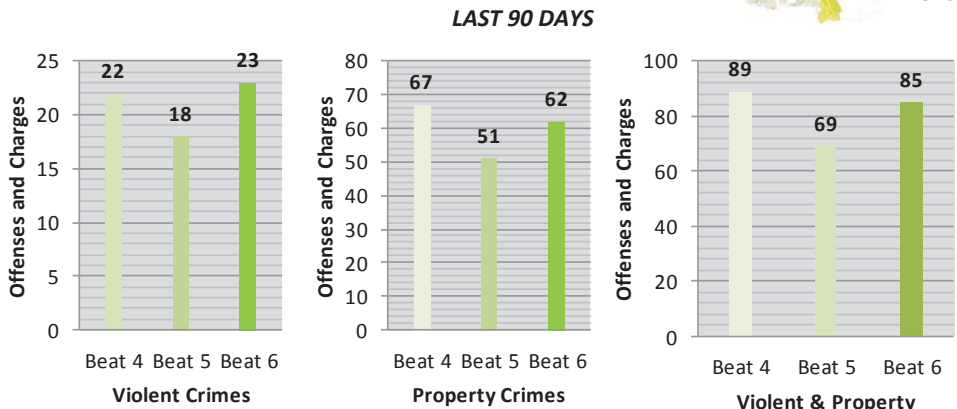
BEAT 5 CENTRAL	Nov	Dec	+/-	MON %	YoY17	YoY18	+/- %	L90P	L90N	+/- %
Violent Crimes					YOY 2017- 2018			LAST90DAYS		
Robbery 211A Armed	1	0	-1	-100%	18	7	-61%	1	2	+100%
Robbery 212.5 Home	0	0	0	-%	0	1	-%	0	1	-%
Robbery 211 Estes	0	0	0	-%	0	1	-%	0	0	-%
Robbery 211S Strongarm	0	1	1	-%	5	17	+240%	5	4	-20%
Robbery 664/211 Attempt	0	0	0	-%	2	1	-50%	1	0	-100%
Carjacking 215	0	0	0	-%	2	3	+50%	1	0	-100%
Assault DW 245 A1	2	0	-2	-100%	18	20	+11%	6	6	0%
Aggravated Battery 243 D	0	1	1	-%	1	4	+300%	1	1	0%
Assault Firearm 245 A2	0	0	0	-%	13	8	-38%	0	2	-%
Attempt Homicide 664/187	0	0	0	-%	1	3	+200%	2	0	-100%
Homicide 187	0	0	0	-%	2	4	+100%	2	1	-50%
Shooting @ Dwelling 246	1	1	0	0%	18	12	-33%	2	2	0%
Shooting @ Vehicle 247	0	0	0	-%	1	1	0%	0	0	-%
Rape 261	0	0	0	-%	1	2	+100%	0	1	-%
Child, Sodomy 288 289	0	1	1	-%	2	5	+150%	2	0	-100%
Battery 243 E1	3	2	-1	-33%	17	22	+29%	6	7	+17%
Battery 273.5	2	3	1	+50%	27	30	+11%	8	10	+25%
Property Crimes					YOY 2017- 2018			LAST90DAYS		
Arson 451	1	0	-1	-100%	5	8	+60%	2	1	-50%
Auto Burglary 459 A	2	3	1	+50%	30	26	-13%	5	4	-20%
Commercial Burglary 459 C	0	1	1	-%	4	5	+25%	1	1	0%
Residential Burglary 459 R	2	2	0	0%	22	12	-45%	2	4	+100%
Grand Theft 487	3	3	0	0%	18	22	+22%	6	8	+33%
Petty Theft 484 488	5	3	-2	-40%	43	37	-14%	10	11	+10%
Vehicle Theft 10851	6	2	-4	-67%	86	114	+33%	27	22	-19%
Total Violent Crimes	3	3	0	0%	65	76	+17%	21	18	-14%
Total Property Crimes	19	14	-5	-26%	208	224	+8%	53	51	-4%
Total Violent and Property	22	17	-5	-23%	273	300	+10%	74	69	-7%
Total Burglaries	4	6	2	+50%	56	43	-23%	8	9	+13%
Percentage of Citywide	3%	5%	+2%		3%	3%		2%	2%	
Total Robberies	1	1	0	0%	27	30	+11%	8	7	-13%
Percentage of Citywide	3%	3%	+0%		6%	8%		10%	6%	
Vehicle Theft % Citywide	6%	3%	-3%		7%	10%		10%	7%	
Calls for Service					YOY 2017- 2018			LAST90DAYS		
Drugs	4	2	-2	-50%	30	27	-10%	3	9	+200%
Loitering 647B	2	1	-1	-50%	49	17	-65%	4	5	+25%
Person w/ Gun	2	2	0	0%	13	15	+15%	1	4	+300%
Shooting	11	12	1	+9%	161	157	-2%	39	30	-23%
Shotspotter					YOY 2017- 2018			LAST90DAYS		
Activations (SSA)	9	7	-2	-22%	144	134	-7%	38	27	-29%
Rounds Detected (SSR)	44	46	2	+5%	816	741	-9%	179	172	-4%
Percentage of Citywide (SSA)	23%	10%	-12%		22%	24%		31%	18%	
Percentage of Citywide (SSR)	21%	13%	-8%		23%	24%		23%	23%	



RICHMOND POLICE DEPARTMENT

PRE-UCR REPORT
*as of reports completed on
1/02/19

BEAT 6 CENTRAL	Nov	Dec	+/-	MON %	YoY17	YoY18	+/- %	L90P	L90N	+/- %
Violent Crimes					YOY 2017- 2018			LAST90DAYS		
Robbery 211A Armed	1	1	0	0%	18	14	-22%	5	5	0%
Robbery 212.5 Home	0	0	0	-%	2	2	0%	2	0	-100%
Robbery 211 Estes	1	1	0	0%	4	4	0%	1	2	+100%
Robbery 211S Strongarm	3	0	-3	-100%	25	26	+4%	7	6	-14%
Robbery 664/211 Attempt	0	0	0	-%	7	4	-43%	2	0	-100%
Carjacking 215	0	0	0	-%	5	3	-40%	2	0	-100%
Assault DW 245 A1	1	2	1	+100%	23	32	+39%	11	5	-55%
Aggravated Battery 243 D	0	0	0	-%	5	10	+100%	3	1	-67%
Assault Firearm 245 A2	0	1	1	-%	17	15	-12%	6	4	-33%
Attempt Homicide 664/187	0	0	0	-%	1	1	0%	1	0	-100%
Homicide 187	0	0	0	-%	2	1	-50%	1	0	-100%
Shooting @ Dwelling 246	2	2	0	0%	12	15	+25%	5	6	+20%
Shooting @ Vehicle 247	0	0	0	-%	4	5	+25%	1	0	-100%
Rape 261	0	0	0	-%	5	4	-20%	1	0	-100%
Child, Sodomy 288 289	0	0	0	-%	10	6	-40%	3	0	-100%
Battery 243 E1	1	1	0	0%	22	32	+45%	10	3	-70%
Battery 273.5	2	4	2	+100%	45	35	-22%	14	10	-29%
Property Crimes					YOY 2017- 2018			LAST90DAYS		
Arson 451	1	0	-1	-100%	8	8	0%	5	1	-80%
Auto Burglary 459 A	4	3	-1	-25%	86	49	-43%	16	8	-50%
Commercial Burglary 459 C	1	0	-1	-100%	8	5	-38%	3	1	-67%
Residential Burglary 459 R	1	0	-1	-100%	24	19	-21%	1	4	+300%
Grand Theft 487	1	2	1	+100%	26	25	-4%	5	5	0%
Petty Theft 484 488	7	10	3	+43%	107	96	-10%	26	25	-4%
Vehicle Theft 10851	6	5	-1	-17%	127	118	-7%	20	18	-10%
Total Violent Crimes	6	5	-1	-17%	124	122	-2%	45	23	-49%
Total Property Crimes	21	20	-1	-5%	386	320	-17%	76	62	-18%
Total Violent and Property	27	25	-2	-7%	510	442	-13%	121	85	-30%
Total Burglaries	6	3	-3	-50%	118	73	-38%	20	13	-35%
Percentage of Citywide	4%	2%	-2%		7%	5%		6%	3%	
Total Robberies	5	2	-3	-60%	61	53	-13%	19	13	-32%
Percentage of Citywide	14%	6%	-8%		14%	14%		24%	12%	
Vehicle Theft % Citywide	6%	7%	+1%		11%	10%		8%	6%	
Calls for Service					YOY 2017- 2018			LAST90DAYS		
Drugs	2	2	0	0%	43	72	+67%	21	10	-52%
Loitering 647B	4	5	1	+25%	106	106	0%	24	20	-17%
Person w/ Gun	1	2	1	+100%	28	34	+21%	10	4	-60%
Shooting	11	17	6	+55%	150	157	+5%	38	35	-8%
Shotspotter					YOY 2017- 2018			LAST90DAYS		
Activations (SSA)	8	12	4	+50%	72	88	+22%	23	18	-22%
Rounds Detected (SSR)	27	55	28	+104%	388	548	+41%	199	80	-60%
Percentage of Citywide (SSA)	20%	18%	-2%		11%	15%		19%	12%	
Percentage of Citywide (SSR)	13%	16%	3%		11%	18%		26%	10%	



SPARSE INSTANCES **SIGNIFICANT INSTANCES**

DATA COMPARES CENTRAL BEATS ONLY, NOT ALL BEATS

*note: District data is allocated by beat boundaries, not assigned beats

FULL YEAR 2018



NORTHERN PART 1 CRIMES	Jan	Feb	Mar	Apr	May	Jun	Jul	Aug	Sep	Oct	Nov	Dec	Month %	2 year avg	SD (1SD)	YTD2017	YTD2018	YTD %	YTD2015	YTD2016	-	Last 90 Previous	Last 90 Current	L90 %
VIOLENT CRIMES																								
	Monthly												Quantitative statistics			Year vs Year		12 months vs 12 months			Last 90 days			
[211A] Armed Robbery	10	3	4	4	5	7	2	2	1	7	3	5	+67%	5	2	58	48	-17%	75	40		11	11	0%
[212.5] Home Robbery	2	5	0	0	1	0	1	1	0	0	2	0	-100%	1	1	7	13	+86%	6	6		2	2	0%
[211E] Estes Robbery	0	1	0	1	3	1	0	5	1	2	2	3	+50%	1	1	12	17	+42%	16	10		6	5	-17%
[211S] Strongarm Robbery	3	6	8	4	6	7	4	4	4	3	4	6	+50%	5	2	56	54	-4%	41	56		15	11	-27%
[664/211] Attempted Robbery	5	1	1	2	1	1	0	0	0	1	0	0	-%	1	1	12	11	-8%	6	2		1	0	-100%
[215] Carjacking	0	0	0	1	0	2	3	0	1	0	3	1	-67%	1	1	9	13	+44%	9	9		6	4	-33%
[245 A1] Assault D. Weapon	1	3	6	9	1	5	3	9	6	3	4	3	-25%	5	3	43	62	+44%	45	43		21	13	-38%
[243 D] Aggravated Battery	1	0	0	0	1	3	1	0	0	1	1	2	+100%	1	1	14	11	-21%	13	17		5	2	-60%
[245 A2] Assault with Firearm	0	2	2	1	1	0	5	0	0	1	0	0	-%	1	1	13	12	-8%	10	12		5	1	-80%
[664/187] Attempted Homicide	0	0	0	0	0	0	0	1	1	0	1	0	-100%	0	0	3	3	0%	3	0		1	2	+100%
[187] Homicide	0	0	0	0	2	1	0	0	0	0	1	1	0%	0	1	5	4	-20%	8	5		1	1	0%
[246] Shooting @ Dwelling	5	1	0	1	1	1	1	2	2	4	3	3	0%	3	2	37	23	-38%	14	23		5	9	+80%
[247] Shooting @ Vehicle	1	1	0	4	1	1	0	0	0	0	0	0	-%	1	1	6	9	+50%	3	3		1	0	-100%
[261] Rape	0	1	1	0	0	1	1	0	0	1	0	3	-%	1	1	5	12	+140%	10	10		3	7	+133%
[288, 289] Child, Sodomy	0	1	0	0	1	0	2	0	0	0	1	1	0%	1	1	11	7	-36%	9	5		3	0	-100%
[243 E1] Domestic Battery	2	5	3	5	4	4	10	8	6	5	6	6	0%	5	2	43	60	+40%	60	64		22	17	-23%
[273.5] Domestic Battery	8	6	8	5	11	3	10	7	8	11	6	12	+100%	9	3	106	85	-20%	91	101		21	24	+14%
PROPERTY CRIMES																								
	Monthly												Quantitative statistics			Year vs Year		12 months vs 12 months			Last 90 days			
[451] Arson	1	1	1	0	1	0	0	1	0	1	1	2	+100%	1	1	11	9	-18%	7	11		1	3	+200%
[459A] Auto Burglary	48	41	32	40	53	82	52	55	45	58	45	46	+2%	46	11	456	552	+21%	355	342		190	147	-23%
[459C] Commercial Burglary	7	7	7	2	7	6	5	2	8	6	8	6	-25%	6	2	69	63	-9%	75	73		13	22	+69%
[459R] Residential Burglary	20	7	9	9	10	21	15	10	11	22	15	14	-7%	17	6	214	152	-29%	242	211		46	47	+2%
[487] Grand Theft	10	6	10	9	6	14	12	11	14	15	21	11	-48%	10	4	98	128	+31%	106	116		39	48	+23%
[484G/488/484] Petty Theft	40	36	37	32	38	45	33	51	37	36	43	41	-5%	38	7	428	413	-4%	457	385		128	111	-13%
[10851] Vehicle Theft	30	25	44	34	32	42	47	33	29	67	55	44	-20%	41	12	462	443	-4%	547	543		125	149	+19%
Total Violent Crimes	22	23	22	22	22	28	22	22	14	19	22	25	+14%	23	5	248	267	+8%	251	215		80	59	-26%
Total Property Crimes	156	123	140	126	147	210	164	163	144	205	188	164	-13%	159	23	1,738	1,760	+1%	1,789	1,681		542	527	-3%
Total Violent and Property	178	146	162	148	169	238	186	185	158	224	210	189	-10%	183	23	1,986	2,027	+2%	2,040	1,896		622	586	-6%
Total Aggravated Assaults	2	5	8	10	5	9	9	10	7	5	7	6	-14%	8	3	78	92	+18%	79	77		33	19	-42%
Total Burglaries	75	55	48	51	70	109	72	67	64	86	68	66	-3%	68	13	739	767	+4%	672	626		249	216	-13%
Total Robberies	20	16	13	12	16	18	10	12	7	13	14	15	+7%	14	3	154	156	+1%	153	123		41	33	-20%
CALLS FOR SERVICE																								
	Monthly												Quantitative statistics			Year vs Year		12 months vs 12 months			Last 90 days			
Drugs	9	9	7	12	6	10	7	1	22	10	4	6	+50%	8	4	75	94	+25%	88	88		18	36	+100%
Loitering 647B	36	19	26	37	12	49	67	47	57	48	43	64	+49%	30	16	218	441	+102%	187	252		163	148	-9%
Person with gun	6	6	5	2	8	3	4	10	8	6	6	4	-33%	5	2	53	66	+25%	53	53		17	20	+18%
Shooting	21	21	22	28	27	34	35	24	19	30	20	34	+70%	30	8	360	295	-18%	327	342		93	69	-26%
SHOTSPOTTER																								
	Monthly												Quantitative statistics			Year vs Year		12 months vs 12 months			Last 90 days			
Activations	3	3	11	13	5	5	6	2	6	11	5	8	+60%	9	4	125	88	-30%	105	103		13	22	+69%
Rounds Detected	36	36	28	29	11	21	41	17	31	43	29	28	-3%	43	24	589	416	-29%	448	438		79	103	+30%



RICHMOND POLICE DEPARTMENT

PRE-UCR REPORT
 *as of reports completed on
 1/02/19



BEAT 7 NORTHERN	Nov	Dec	+/-	MON %	YoY17	YoY18	+/- %	L90P	L90N	+/- %
Violent Crimes					YOY 2017- 2018			LAST90DAYS		
Robbery 211A Armed	1	3	2	+200%	45	30	-33%	5	6	+20%
Robbery 212.5 Home	2	0	-2	-100%	4	5	+25%	1	2	+100%
Robbery 211 Estes	1	1	0	0%	5	8	-9%	3	2	-33%
Robbery 211S Strongarm	2	5	3	+150%	44	45	+2%	11	8	-27%
Robbery 664/211 Attempt	0	0	0	-%	10	7	-30%	0	0	-%
Carjacking 215	3	1	-2	-67%	10	12	+20%	4	4	0%
Assault DW 245 A1	4	1	-3	-75%	39	37	-5%	14	6	-57%
Aggravated Battery 243 D	1	0	-1	-100%	10	6	-40%	1	2	+100%
Assault Firearm 245 A2	0	0	0	-%	6	8	+33%	4	1	-75%
Attempt Homicide 664/187	1	0	-1	-100%	1	2	+100%	1	1	0%
Homicide 187	0	1	1	-%	2	1	-50%	0	1	-%
Shooting @ Dwelling 246	2	3	1	+50%	23	16	-30%	2	7	+250%
Shooting @ Vehicle 247	0	0	0	-%	4	6	+50%	0	0	-%
Rape 261	0	2	2	-%	7	9	+29%	1	4	+300%
Child, Sodomy 288 289	1	0	-1	-100%	8	5	-38%	1	1	0%
Battery 243 E1	1	4	3	+300%	27	27	0%	11	7	-36%
Battery 273.5	3	7	4	+133%	45	40	-11%	10	17	+70%
Property Crimes					YOY 2017- 2018			LAST90DAYS		
Arson 451	0	2	2	-%	8	6	-25%	1	3	+200%
Auto Burglary 459 A	19	23	4	+21%	195	189	-3%	30	57	+90%
Commercial Burglary 459 C	2	3	1	+50%	44	34	-23%	2	9	+350%
Residential Burglary 459 R	6	8	2	+33%	118	80	-32%	13	30	+131%
Grand Theft 487	7	2	-5	-71%	49	62	+27%	17	18	+6%
Petty Theft 484 488	20	24	4	+20%	237	232	-2%	54	61	+13%
Vehicle Theft 10851	33	30	-3	-9%	321	299	-7%	63	95	+51%
Total Violent Crimes	16	14	-2	-13%	191	175	-8%	46	38	-17%
Total Property Crimes	87	92	5	+6%	972	902	-7%	180	273	+52%
Total Violent and Property	103	106	3	+3%	1,163	1,077	-7%	226	311	+38%
Total Burglaries	27	34	7	+26%	357	303	-15%	45	96	+113%
Percentage of Citywide	20%	26%	+6%		20%	19%		13%	24%	
Total Robberies	9	10	1	+11%	118	107	-9%	24	22	-8%
Percentage of Citywide	26%	32%	+7%		27%	28%		30%	20%	
Vehicle Theft % Citywide	32%	41%	+8%		27%	25%		24%	32%	
Calls for Service					YOY 2017- 2018			LAST90DAYS		
Drugs	3	4	1	+33%	56	93	+66%	21	14	-33%
Loitering 647B	41	60	19	+46%	260	487	+87%	167	108	-35%
Person with gun	5	4	-1	-20%	32	38	+19%	9	10	+11%
Shooting	10	26	16	+160%	231	180	-22%	51	54	+6%
Shotspotter					YOY 2017- 2018			LAST90DAYS		
Activations (SSA)	5	11	6	+120%	85	74	-13%	9	24	+167%
Rounds Detected (SSR)	29	63	34	+117%	399	385	-4%	60	126	+110%
Percentage of Citywide (SSA)	13%	16%	4%		13%	13%		7%	16%	
Percentage of Citywide (SSR)	14%	18%	4%		11%	12%		8%	16%	

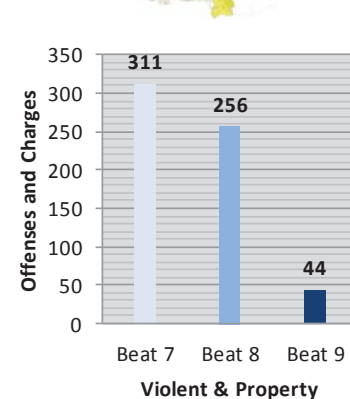
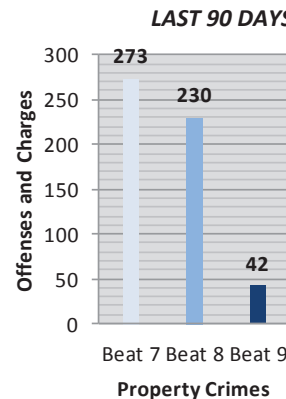
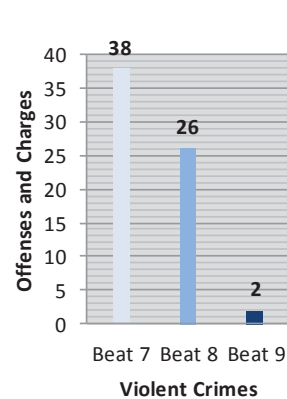
BEAT 8 NORTHERN	Nov	Dec	+/-	MON %	YoY17	YoY18	+/- %	L90P	L90N	+/- %
Violent Crimes					YOY 2017- 2018			LAST90DAYS		
Robbery 211A Armed	2	2	0	0%	21	22	+5%	0	9	-%
Robbery 212.5 Home	0	0	0	-%	2	3	+50%	1	0	-100%
Robbery 211 Estes	1	2	1	+100%	8	12	-%	3	5	+67%
Robbery 211S Strongarm	2	1	-1	-50%	12	14	+17%	1	5	+400%
Robbery 664/211 Attempt	0	0	0	-%	2	1	-50%	0	0	-%
Carjacking 215	0	0	0	-%	0	1	-%	0	0	-%
Assault DW 245 A1	0	2	2	-%	11	18	+64%	6	3	-50%
Aggravated Battery 243 D	0	2	2	-%	5	5	0%	0	2	-%
Assault Firearm 245 A2	0	0	0	-%	10	4	-60%	1	0	-100%
Attempt Homicide 664/187	0	0	0	-%	1	1	0%	1	0	-100%
Homicide 187	0	0	0	-%	1	1	0%	0	0	-%
Shooting @ Dwelling 246	0	0	0	-%	17	5	-71%	2	2	0%
Shooting @ Vehicle 247	0	0	0	-%	2	3	+50%	0	0	-%
Rape 261	0	1	1	-%	2	2	0%	1	1	0%
Child, Sodomy 288 289	0	1	1	-%	3	2	-33%	1	1	0%
Battery 243 E1	5	2	-3	-60%	17	27	+59%	7	10	+43%
Battery 273.5	2	4	2	+100%	62	53	-15%	16	10	-38%
Property Crimes					YOY 2017- 2018			LAST90DAYS		
Arson 451	1	0	-1	-100%	4	5	+25%	1	1	0%
Auto Burglary 459 A	24	23	-1	-4%	278	386	+39%	115	89	-23%
Commercial Burglary 459 C	4	3	-1	-25%	26	33	+27%	9	9	0%
Residential Burglary 459 R	3	6	3	+100%	73	60	-18%	21	12	-43%
Grand Theft 487	10	9	-1	-10%	59	66	+12%	17	24	+41%
Petty Theft 484 488	16	15	-1	-6%	184	188	+2%	52	42	-19%
Vehicle Theft 10851	17	13	-4	-24%	145	143	-1%	37	53	+43%
Total Violent Crimes	5	11	6	+120%	78	86	+10%	15	26	+73%
Total Property Crimes	75	69	-6	-8%	769	881	+15%	252	230	-9%
Total Violent and Property	80	80	0	0%	847	967	+14%	267	256	-4%
Total Burglaries	31	32	1	+3%	377	479	+27%	145	110	-24%
Percentage of Citywide	23%	25%	+1%		22%	30%		41%	27%	
Total Robberies	5	5	0	0%	45	53	+18%	5	19	+280%
Percentage of Citywide	14%	16%	+2%		10%	14%		6%	17%	
Vehicle Theft % Citywide	17%	18%	+1%		12%	12%		14%	18%	
Calls for Service					YOY 2017- 2018			LAST90DAYS		
Drugs	2	0	-2	-100%	23	16	-30%	4	4	0%
Loitering 647B	2	3	1	+50%	12	14	+17%	3	5	+67%
Person with gun	1	0	-1	-100%	21	31	+48%	13	6	-54%
Shooting	3	6	3	+100%	112	86	-23%	19	15	-21%
Shotspotter					YOY 2017- 2018			LAST90DAYS		
Activations (SSA)	0	0	0	-%	47	17	-64%	5	3	-40%
Rounds Detected (SSR)	0	0	0	-%	222	66	-70%	29	9	-69%
Percentage of Citywide (SSA)	0%	0%	0%		7%	3%		4%	2%	
Percentage of Citywide (SSR)	0%	0%	0%		6%	2%		4%	1%	



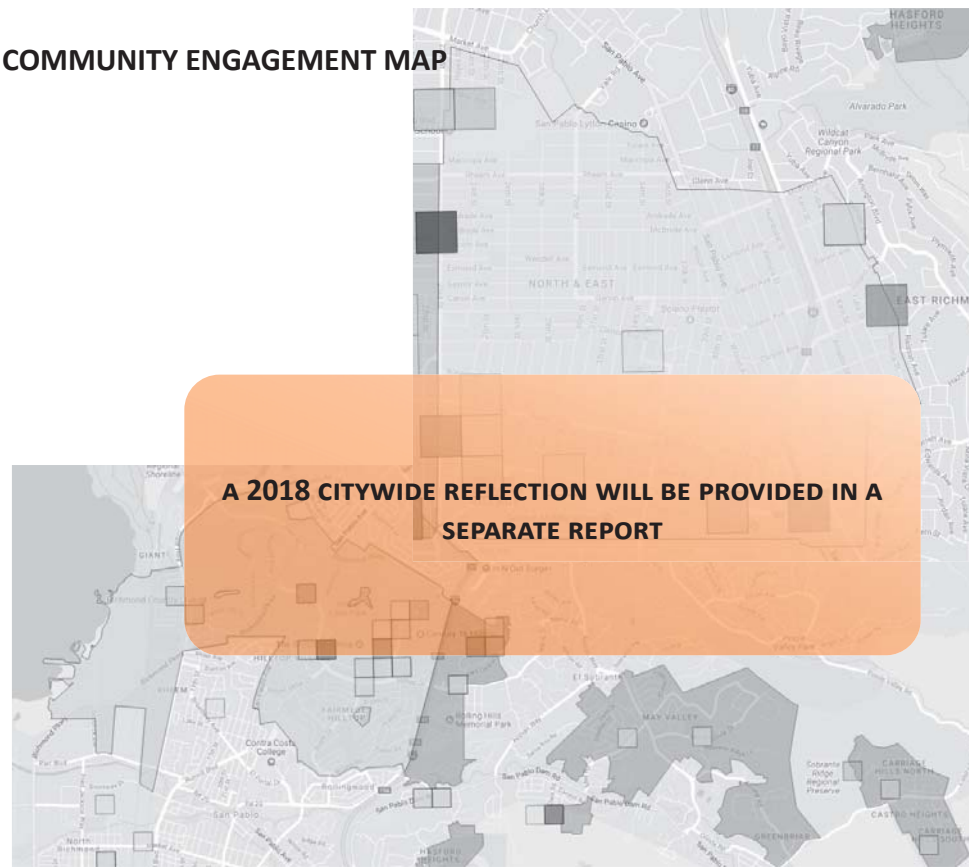
RICHMOND POLICE DEPARTMENT

PRE-UCR REPORT
*as of reports completed on
1/02/19

BEAT 9 NORTHERN	Nov	Dec	+/-	MON %	YoY17	YoY18	+/- %	L90P	L90N	+/- %
Violent Crimes					YOY 2017- 2018			LAST90DAYS		
Robbery 211A Armed	0	0	0	-%	0	2	-%	0	0	-%
Robbery 212.5 Home	0	0	0	-%	2	4	+100%	0	0	-%
Robbery 211 Estes	0	0	0	-%	0	0	-%	0	0	-%
Robbery 211S Strongarm	0	0	0	-%	2	1	-50%	0	0	-%
Robbery 664/211 Attempt	0	0	0	-%	0	2	-%	0	0	-%
Carjacking 215	0	0	0	-%	0	1	-%	0	0	-%
Assault DW 245 A1	0	0	0	-%	0	5	-%	1	1	0%
Aggravated Battery 243 D	0	0	0	-%	0	1	-%	0	0	-%
Assault Firearm 245 A2	0	0	0	-%	1	0	-100%	0	0	-%
Attempt Homicide 664/187	0	0	0	-%	0	0	-%	0	0	-%
Homicide 187	1	0	-1	-100%	2	1	-50%	0	1	-%
Shooting @ Dwelling 246	1	0	-1	-100%	0	3	-%	0	1	-%
Shooting @ Vehicle 247	0	0	0	-%	0	0	-%	0	0	-%
Rape 261	0	0	0	-%	0	0	-%	0	0	-%
Child, Sodomy 288 289	0	0	0	-%	2	2	0%	0	0	-%
Battery 243 E1	0	0	0	-%	3	14	+367%	6	0	-100%
Battery 273.5	0	1	1	-%	8	4	-50%	0	1	-%
Property Crimes					YOY 2017- 2018			LAST90DAYS		
Arson 451	0	0	0	-%	0	1	-%	0	1	-%
Auto Burglary 459 A	1	0	-1	-100%	26	17	-35%	8	2	-75%
Commercial Burglary 459 C	2	0	-2	-100%	7	7	0%	4	2	-50%
Residential Burglary 459 R	4	0	-4	-100%	43	19	-56%	1	6	+500%
Grand Theft 487	3	0	-3	-100%	4	13	+225%	4	4	0%
Petty Theft 484 488	3	1	-2	-67%	43	45	+5%	14	11	-21%
Vehicle Theft 10851	3	1	-2	-67%	33	42	+27%	11	16	+45%
Total Violent Crimes	1	0	-1	-100%	9	19	+111%	1	2	+100%
Total Property Crimes	16	2	-14	-88%	156	144	-8%	42	42	0%
Total Violent and Property	17	2	-15	-88%	165	163	-1%	43	44	+2%
Total Burglaries	7	0	-7	-100%	76	43	-43%	13	10	-23%
Percentage of Citywide	5%	0%	-5%		4%	3%		4%	2%	
Total Robberies	0	0	0	-%	4	10	+150%	0	0	-%
Percentage of Citywide	0%	0%	0%		1%	3%		0%	0%	
Vehicle Theft % Citywide	3%	1%	-2%		3%	4%		4%	5%	
Calls for Service					YOY 2017- 2018			LAST90DAYS		
Drugs	0	2	2	-%	9	12	+33%	5	3	-40%
Loitering 647B	0	1	1	-%	4	10	+150%	1	3	+200%
Person with gun	0	0	0	-%	5	1	-80%	0	0	-%
Shooting	7	2	-5	-71%	37	44	+19%	8	15	+88%
Shotspotter (NO SST SENSORS BEAT 9)					YOY 2017- 2018			LAST90DAYS		
Activations (SSA)	0	0	0	-%	0	0	-%	0	0	-%
Rounds Detected (SSR)	0	0	0	-%	0	0	-%	0	0	-%
Percentage of Citywide (SSA)	0%	0%	0%		0%	0%		0%	0%	
Percentage of Citywide (SSR)	0%	0%	0%		0%	0%		0%	0%	



COMMUNITY ENGAGEMENT MAP



A 2018 CITYWIDE REFLECTION WILL BE PROVIDED IN A SEPARATE REPORT

SPARSE INSTANCES **SIGNIFICANT INSTANCES**



SOUTHERN PART 1 CRIMES	Jan	Feb	Mar	Apr	May	Jun	Jul	Aug	Sep	Oct	Nov	Dec	Month %	2 year avg	SD (1SD)	YTD2017	YTD2018	YTD %	YTD2015	YTD2016	-	Last 90 Previous	Last 90 Current	L90 %
VIOLENT CRIMES																								
	Monthly												Quantitative statistics			Year vs Year		12 months vs 12 months			Last 90 days			
[211A] Armed Robbery	6	3	4	1	4	3	6	2	1	6	4	4	0%	4	2	47	44	-6%	41	46		9	14	+56%
[212.5] Home Robbery	1	0	0	0	1	0	1	0	1	1	1	1	0%	1	1	5	7	+40%	4	2		2	3	+50%
[211E] Estes Robbery	0	0	0	0	0	0	1	1	0	2	0	1	-%	0	1	4	5	+25%	13	6		2	3	+50%
[211S] Strongarm Robbery	4	5	2	1	5	2	3	2	0	5	4	2	-50%	3	2	42	35	-17%	41	41		5	11	+120%
[664/211] Attempted Robbery	1	0	2	0	1	0	1	1	0	0	0	1	-%	1	1	4	7	+75%	2	2		2	1	-50%
[215] Carjacking	1	1	0	0	0	0	1	0	0	0	0	1	-%	1	1	8	4	-50%	5	6		1	1	0%
[245 A1] Assault D. Weapon	3	5	6	6	1	4	3	5	4	7	6	3	-50%	6	2	68	53	-22%	49	33		12	16	+33%
[243 D] Aggravated Battery	0	0	0	1	0	0	1	2	0	2	0	0	-%	1	1	17	6	-65%	11	6		3	2	-33%
[245 A2] Assault with Firearm	0	2	2	3	0	1	0	4	2	1	0	3	-%	2	1	17	18	+6%	30	34		6	4	-33%
[664/187] Attempted Homicide	1	0	0	1	0	0	0	0	0	0	0	0	-%	0	0	3	2	-33%	3	3		0	0	-%
[187] Homicide	0	0	0	4	0	0	1	0	0	1	1	0	-100%	1	1	5	7	+40%	9	12		1	2	+100%
[246] Shooting @ Dwelling	3	3	3	3	7	3	1	3	2	3	2	2	0%	3	2	43	35	-19%	37	31		6	7	+17%
[247] Shooting @ Vehicle	1	0	1	1	0	0	0	0	0	0	1	0	-100%	1	1	12	4	-67%	2	5		0	1	-%
[261] Rape	0	0	0	3	2	0	2	0	0	0	0	1	-%	1	1	6	8	+33%	10	12		2	1	-50%
[288] Lewd Acts on Child	1	1	0	2	1	2	0	3	0	3	0	2	-%	1	1	11	15	+36%	17	4		3	5	+67%
[243 E1] Domestic Battery	9	9	5	2	11	6	4	3	6	3	6	9	+50%	6	3	77	73	-5%	62	56		13	18	+38%
[273.5] Domestic Battery	3	9	5	2	6	8	13	14	9	12	8	5	-38%	10	4	136	94	-31%	115	94		36	25	-31%
PROPERTY CRIMES																								
	Monthly												Quantitative statistics			Year vs Year		12 months vs 12 months			Last 90 days			
[451] Arson	0	1	2	0	0	0	4	1	1	3	4	1	-75%	1	1	11	17	+55%	11	8		6	8	+33%
[459A] Auto Burglary	27	43	31	22	40	35	22	14	12	24	32	39	+22%	32	10	447	341	-24%	441	340		48	95	+98%
[459C] Commercial Burglary	3	3	4	13	3	6	10	8	6	3	4	4	0%	6	3	76	67	-12%	47	41		24	11	-54%
[459R] Residential Burglary	14	8	14	15	21	8	16	9	11	12	15	7	-53%	12	4	128	150	+17%	177	75		36	34	-6%
[487] Grand Theft	4	12	8	12	10	6	12	7	9	6	13	6	-54%	7	2	76	105	+38%	79	55		28	25	-11%
[484G/488/484] Petty Theft	26	23	33	26	15	28	29	25	28	36	22	26	+18%	26	5	310	317	+2%	294	256		82	84	+2%
[10851] Vehicle Theft	29	32	38	38	28	21	31	31	32	29	26	19	-27%	29	5	319	354	+11%	314	296		94	74	-21%
Total Violent Crimes	18	17	16	22	15	12	20	20	8	28	16	19	+19%	20	5	237	211	-11%	235	207		48	63	+31%
Total Property Crimes	103	122	130	126	117	104	124	95	99	113	116	102	-12%	114	12	1,367	1,351	-1%	1,363	1,071		318	331	+4%
Total Violent and Property	121	139	146	148	132	116	144	115	107	141	132	121	-8%	134	14	1,604	1,562	-3%	1,598	1,278		366	394	+8%
Total Aggravated Assaults	4	7	8	15	1	5	5	11	6	11	7	6	-14%	9	4	110	86	-22%	102	88		22	24	+9%
Total Burglaries	44	54	49	50	64	49	48	31	29	39	51	50	-2%	50	10	651	558	-14%	665	456		108	140	+30%
Total Robberies	13	9	8	2	11	5	13	6	2	14	9	10	+11%	9	4	110	102	-7%	106	103		21	33	+57%
CALLS FOR SERVICE																								
	Monthly												Quantitative statistics			Year vs Year		12 months vs 12 months			Last 90 days			
Drugs	8	6	4	6	6	6	2	2	6	14	9	5	-44%	6	3	66	74	+12%	78	79	+1%	10	28	+180%
Loitering 647B	13	9	8	13	13	6	17	8	8	25	7	8	+14%	15	6	213	135	-37%	285	249	-13%	33	40	+21%
Person with gun	9	6	2	4	2	7	5	2	3	8	2	5	+150%	5	3	54	55	+2%	44	50	+14%	10	15	+50%
Shooting	39	20	22	32	19	27	24	24	16	19	16	43	+169%	28	10	367	301	-18%	395	419	+6%	64	78	+22%
SHOTSPOTTER																								
	Monthly												Quantitative statistics			Year vs Year		12 months vs 12 months			Last 90 days			
Activations	24	14	15	19	11	6	10	13	12	15	10	25	+150%	17	8	211	149	-29%	220	256	+16%	35	50	+43%
Rounds Detected	163	50	75	107	56	51	50	97	44	69	28	115	+311%	94	66	1,145	790	-31%	1,341	1,380	+3%	191	212	+11%



RICHMOND POLICE DEPARTMENT

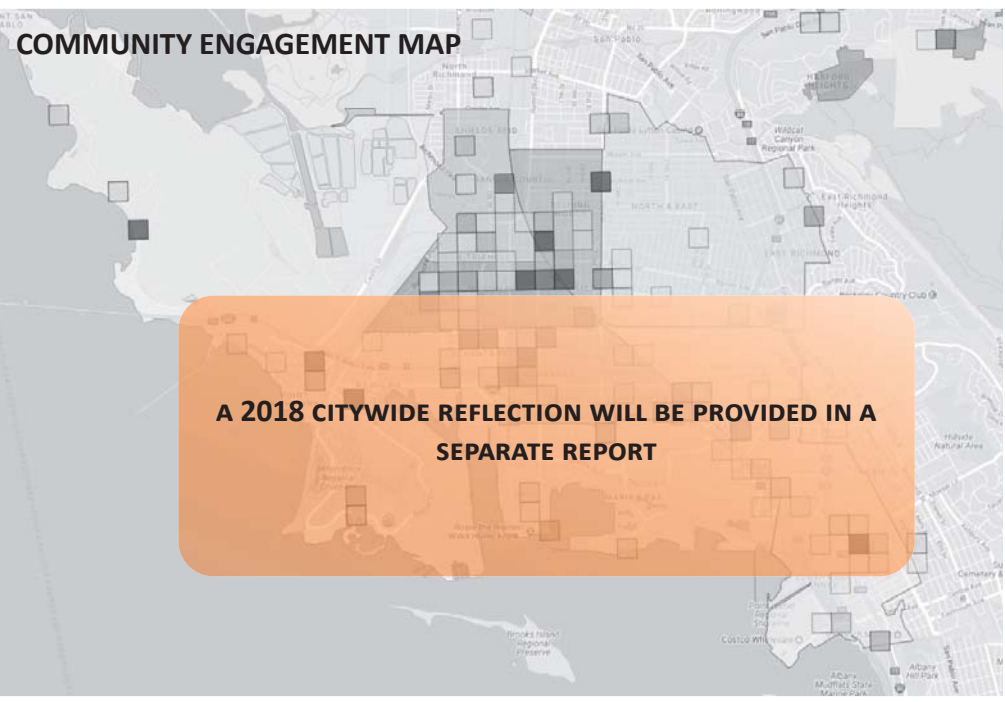
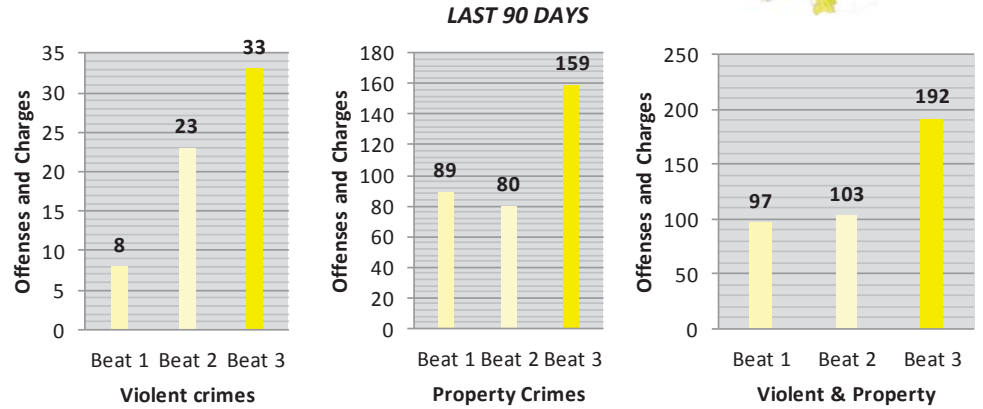
PRE-UCR REPORT
*as of reports completed on
1/02/19

BEAT 1 SOUTHERN	Nov	Dec	+/-	MON %	YoY17	YoY18	+/- %	L90P	L90N	+/- %
Violent Crimes					YOY 2017- 2018			LAST90DAYS		
Robbery 211A Armed	0	2	2	-%	7	8	+14%	1	2	+100%
Robbery 212.5 Home	0	0	0	-%	0	0	-%	0	0	-%
Robbery 211E Estes	0	0	0	-%	2	2	0%	1	1	0%
Robbery 211S Strongarm	0	0	0	-%	13	7	-46%	4	1	-75%
Robbery 664/211 Attempt	0	0	0	-%	0	0	-%	0	0	-%
Carjacking 215	0	0	0	-%	4	1	-75%	0	0	-%
Assault DW 245 A1	1	0	-1	-100%	11	15	+36%	4	1	-75%
Aggravated Battery 243 D	0	0	0	-%	4	2	-50%	1	0	-100%
Assault Firearm 245 A2	0	0	0	-%	3	1	-67%	1	0	-100%
Attempt Homicide 664/187	0	1	1	-%	0	2	-%	0	1	-%
Homicide 187	0	0	0	-%	1	0	-100%	0	0	-%
Shooting @ Dwelling 246	0	0	0	-%	6	3	-50%	2	0	-100%
Shooting @ Vehicle 247	0	0	0	-%	2	0	-100%	0	0	-%
Rape 261	0	0	0	-%	0	3	-%	0	1	-%
Child, Sodomy 288 289	0	1	1	-%	5	7	+40%	2	1	-50%
Battery 243 E1	3	1	-2	-67%	11	16	+45%	4	5	+25%
Battery 273.5	1	1	0	0%	23	25	+9%	11	5	-55%
Property Crimes					YOY 2017- 2018			LAST90DAYS		
Arson 451	0	0	0	-%	2	3	+50%	2	0	-100%
Auto Burglary 459 A	6	22	16	+267%	87	82	-6%	10	34	+240%
Commercial Burglary 459 C	3	2	-1	-33%	35	23	-34%	8	6	-25%
Residential Burglary 459 R	1	0	-1	-100%	21	23	+10%	8	2	-75%
Grand Theft 487	1	3	2	+200%	31	49	+58%	12	9	-25%
Petty Theft 484 488	9	5	-4	-44%	108	99	-8%	23	21	-9%
Vehicle Theft 10851	6	5	-1	-17%	76	103	+36%	25	17	-32%
Total Violent Crimes	8	7	-1	-13%	50	48	-4%	14	8	-43%
Total Property Crimes	26	37	11	+42%	360	382	+6%	88	89	+1%
Total Violent and Property	34	44	10	+29%	410	430	+5%	102	97	-5%
Total Burglaries	10	24	14	+140%	143	128	-10%	26	42	+62%
Percentage of Citywide	7%	18%	+11%		8%	8%		7%	10%	
Total Robberies	0	2	2	-%	26	18	-31%	6	4	-33%
Percentage of Citywide	0%	6%	+6%		6%	5%		8%	4%	
Vehicle Theft % Citywide	6%	7%	+1%		6%	9%		9%	6%	
Calls for Service					YOY 2017- 2018			LAST90DAYS		
Drugs	5	2	-3	-60%	33	37	+12%	6	13	+117%
Loitering 647B	4	4	0	0%	143	47	-67%	11	17	+55%
Person with gun	0	1	1	-%	4	12	+200%	3	3	0%
Shooting	2	14	12	+600%	84	72	-14%	14	22	+57%
Shotspotter					YOY 2017- 2018			LAST90DAYS		
Activations (SSA)	1	7	6	+600%	27	30	+11%	6	10	+67%
Rounds Detected (SSR)	2	25	23	+1150%	129	116	-10%	19	36	+89%
Percentage of Citywide (SSA)	3%	10%	8%		4%	5%		5%	7%	
Percentage of Citywide (SSR)	1%	7%	6%		4%	4%		2%	5%	

BEAT 2 SOUTHERN	Nov	Dec	+/-	MON %	YoY17	YoY18	+/- %	L90P	L90N	+/- %
Violent Crimes					YOY 2017- 2018			LAST90DAYS		
Robbery 211A Armed	2	0	-2	-100%	10	15	+50%	2	4	+100%
Robbery 212.5 Home	0	0	0	-%	1	4	+300%	1	1	0%
Robbery 211E Estes	0	1	1	-%	0	1	-%	0	1	-%
Robbery 211S Strongarm	2	1	-1	-50%	9	12	+33%	1	5	+400%
Robbery 664/211 Attempt	0	1	1	-%	1	4	+300%	1	1	0%
Carjacking 215	0	0	0	-%	1	2	+100%	1	0	-100%
Assault DW 245 A1	2	2	0	0%	12	17	+42%	4	4	0%
Aggravated Battery 243 D	0	0	0	-%	4	4	0%	1	2	+100%
Assault Firearm 245 A2	0	1	1	-%	7	6	-14%	1	2	+100%
Attempt Homicide 664/187	0	0	0	-%	1	0	-100%	0	0	-%
Homicide 187	0	0	0	-%	2	1	-50%	0	0	-%
Shooting @ Dwelling 246	1	1	0	0%	14	13	-7%	1	3	+200%
Shooting @ Vehicle 247	0	0	0	-%	4	1	-75%	0	0	-%
Rape 261	0	1	1	-%	2	3	+50%	0	1	-%
Child, Sodomy 288 289	0	0	0	-%	2	2	0%	0	2	-%
Battery 243 E1	3	1	-2	-67%	21	13	-38%	2	5	+150%
Battery 273.5	4	2	-2	-50%	37	29	-22%	9	7	-22%
Property Crimes					YOY 2017- 2018			LAST90DAYS		
Arson 451	3	0	-3	-100%	1	5	+400%	0	5	-%
Auto Burglary 459 A	2	4	2	+100%	42	28	-33%	4	7	+75%
Commercial Burglary 459 C	1	1	0	0%	8	12	+50%	5	2	-60%
Residential Burglary 459 R	2	1	-1	-50%	18	29	+61%	11	6	-45%
Grand Theft 487	2	0	-2	-100%	7	13	+86%	5	3	-40%
Petty Theft 484 488	3	8	5	+167%	49	98	+100%	24	29	+21%
Vehicle Theft 10851	7	9	2	+29%	77	105	+36%	30	28	-7%
Total Violent Crimes	6	7	1	+17%	52	71	+37%	12	23	+92%
Total Property Crimes	20	23	3	+15%	202	290	+44%	79	80	+1%
Total Violent and Property	26	30	4	+15%	254	361	+42%	91	103	+13%
Total Burglaries	5	6	1	+20%	68	69	+1%	20	15	-25%
Percentage of Citywide	4%	5%	+1%		4%	4%		6%	4%	
Total Robberies	4	3	-1	-25%	22	38	+73%	6	12	+100%
Percentage of Citywide	11%	10%	-2%		5%	10%		8%	11%	
Vehicle Theft % Citywide	7%	12%	+5%		6%	9%		11%	9%	
Calls for Service					YOY 2017- 2018			LAST90DAYS		
Drugs	5	1	-4	-80%	27	22	-19%	4	7	+75%
Loitering 647B	3	2	-1	-33%	32	24	-25%	4	8	+100%
Person with gun	2	1	-1	-50%	27	10	-63%	2	4	+100%
Shooting	9	3	-6	-67%	131	80	-39%	18	17	-6%
Shotspotter					YOY 2017- 2018			LAST90DAYS		
Activations (SSA)	3	12	9	+300%	114	66	-42%	11	23	+109%
Rounds Detected (SSR)	6	57	51	+850%	666	276	-59%	63	107	+70%
Percentage of Citywide (SSA)	8%	18%	10%		17%	12%		9%	15%	
Percentage of Citywide (SSR)	3%	17%	14%		19%	9%		8%	14%	



BEAT 3 SOUTHERN	Nov	Dec	+/-	MON%	YoY17	YoY18	+/- %	L90P	L90N	+/- %
Violent Crimes					YOY 2017- 2018			LAST90DAYS		
Robbery 211A Armed	2	2	0	0%	25	21	-16%	6	8	+33%
Robbery 212.5 Home	1	1	0	0%	3	4	+33%	1	2	+100%
Robbery 211E Estes	0	0	0	-%	2	2	-%	1	1	0%
Robbery 211S Strongarm	2	1	-1	-200%	15	19	+27%	2	5	+150%
Robbery 664/211 Attempt	0	0	0	-%	3	5	+67%	2	0	-100%
Carjacking 215	0	1	1	-%	2	1	-50%	0	1	-%
Assault DW 245 A1	3	1	-2	-67%	36	32	-11%	8	11	+38%
Aggravated Battery 243 D	0	0	0	-%	9	1	-89%	1	0	-100%
Assault Firearm 245 A2	0	2	2	-%	7	12	+71%	4	2	-50%
Attempt Homicide 664/187	0	0	0	-%	1	1	0%	0	0	-%
Homicide 187	1	0	-1	-100%	1	6	+500%	1	2	+100%
Shooting @ Dwelling 246	0	1	1	-%	20	17	-15%	2	3	+50%
Shooting @ Vehicle 247	1	0	-1	-100%	6	7	+17%	0	1	-%
Rape 261	0	0	0	-%	4	4	0%	2	0	-100%
Child, Sodomy 288 289	0	0	0	-%	3	7	+133%	1	1	0%
Battery 243 E1	0	5	5	-%	43	43	0%	7	6	-14%
Battery 273.5	3	2	-1	-33%	70	47	-33%	16	13	-19%
Property Crimes					YOY 2017- 2018			LAST90DAYS		
Arson 451	1	1	0	0%	6	10	+67%	5	3	-40%
Auto Burglary 459 A	23	13	-10	-43%	279	231	-17%	34	53	+56%
Commercial Burglary 459 C	0	1	1	-%	28	31	+11%	11	2	-82%
Residential Burglary 459 R	12	6	-6	-50%	82	99	+21%	17	26	+53%
Grand Theft 487	8	3	-5	-63%	27	41	+52%	10	11	+10%
Petty Theft 484 488	10	13	3	+30%	127	120	-6%	33	34	+3%
Vehicle Theft 10851	14	5	-9	-64%	155	153	-1%	42	30	-29%
Total Violent Crimes	9	8	-1	-11%	111	115	+4%	29	33	+14%
Total Property Crimes	68	42	-26	-38%	704	685	-3%	152	159	+5%
Total Violent and Property	77	50	-27	-35%	815	800	-2%	181	192	+6%
Total Burglaries	35	20	-15	-43%	389	361	-7%	62	81	+31%
Percentage of Citywide	26%	15%	-11%		22%	23%		18%	20%	
Total Robberies	5	5	0	0%	50	52	+4%	12	17	+42%
Percentage of Citywide	14%	16%	+2%		11%	14%		15%	16%	
Vehicle Theft % Citywide	14%	7%	-7%		13%	13%		16%	10%	
Calls for Service					YOY 2017- 2018			LAST90DAYS		
Drugs	3	2	-1	-33%	20	16	-20%	2	8	+300%
Loitering 647B	1	3	2	+200%	38	63	+66%	15	17	+13%
Person with gun	1	3	2	+200%	24	32	+33%	6	8	+33%
Shooting	11	15	4	+36%	164	145	-12%	35	30	-14%
Shotspotter					YOY 2017- 2018			LAST90DAYS		
Activations (SSA)	6	6	0	0%	96	81	-16%	18	17	-6%
Rounds Detected (SSR)	20	33	13	+65%	598	513	-14%	109	69	-37%
Percentage of Citywide (SSA)	15%	9%	-6%		15%	14%		15%	11%	
Percentage of Citywide (SSR)	10%	10%	0%		17%	16%		14%	9%	



A 2018 CITYWIDE REFLECTION WILL BE PROVIDED IN A SEPARATE REPORT

SPARSE INSTANCES **SIGNIFICANT INSTANCES**

*note: District data is allocated by beat boundaries, not assigned beats